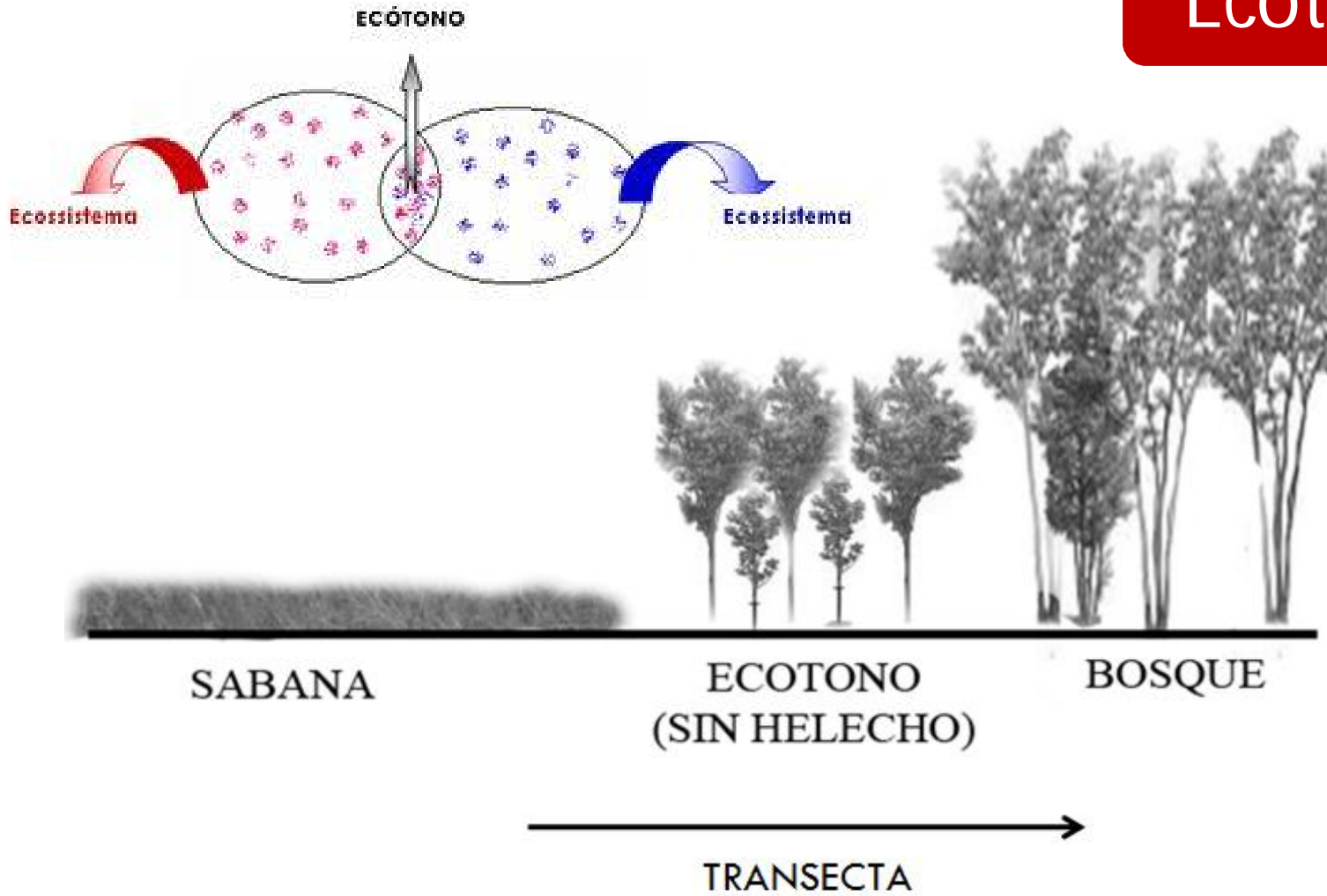
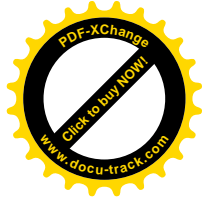


# Ecótono





# MAPA MENTAL

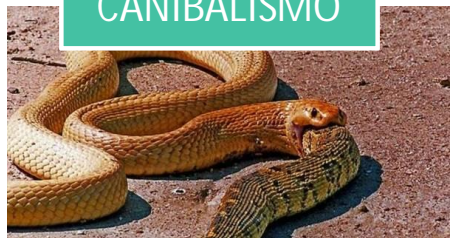
## Desarmônica

## Harmônica

### COMPETIÇÃO



### CANIBALISMO



Intraespecífica



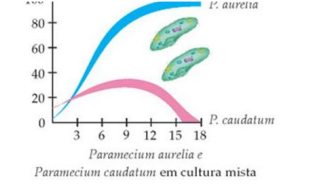
### COLÔNIA



### SOCIEDADE

# RELAÇÕES ECOLÓGICAS

### COMPETIÇÃO



### ANTIBIOSE



### HERBIVORISMO



### PREDATISMO

Interespecífica



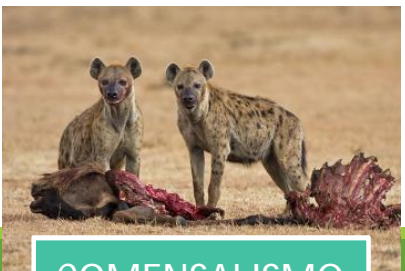
### MUTUALISMO



### EPIFITISMO



### PARASITISMO



### COMENSALISMO



### INQUILINISMO



### COOPERAÇÃO